

THE THREE SISTERS

PORT HILLS CLIMBING



The Three Sisters Area
(Revision A)

Tony Burnell (2022)

General

Inclusion of any climbing area or climb in this guidebook does not mean that there is any R of public access.

The Port Hills Crags are home to rare species of geckos & native flora & fauna take care not to disturb wildlife or damage native plants.

The Three Sisters is an impressive line of red cliffs overlooking the Port of Lyttelton to the East of Lyttelton Rock along the old Crater Rim Walkway. Both Twisted Sister & Middle Sister suffered some significant areas of collapse during the 2010/2011 earthquakes. The crag has good shade in summer although but can feel damp with the red lichen after winter. It is less popular than Lyttelton Rock even though there is a good range of grades from 16 to 27. The crags are located between Lyttelton Rock & the WWII gun emplacements at Greenwood Park.

There are several crags in the 'Three Sisters' area such as 'Baby Brother', a poor crag with dubious rock & no fixed anchors, reputedly climbs are usually soloed & 'Trackside Cliff', information on both of these crags is included here

Access & Restrictions

The Three Sisters are below the old Crater Rim Walkway. Walk times & distance are from the Lyttelton Rock parking.

Restrictions: Dogs must be on a lead during lambing

Permission: None required

Baby Brother

GPS: -43.590550, 172.725972 **Distance:** 800mts **Walk Time:** 10mins **Ownership:** Council Reserve

Trackside Cliff

GPS: -43.5903116, 172.728438 **Distance:** 900mts **Walk Time:** 12mins **Ownership:** Council Reserve

The Twisted Sister

GPS: -43.590602, 172.728368 **Distance:** 1000mts **Walk Time:** 18mins **Ownership:** Council Reserve

The Middle Sister

GPS: -43.590800, 172.729322 **Distance:** 1000mts **Walk Time:** 18mins **Ownership:** Council Reserve

The Ugly Sister

GPS: -43.590813, 172.730796 **Distance:** 1200mts **Walk Time:** 22mins **Ownership:** Council Reserve



For Baby Brother, Trackside Cliff & The Three Sisters, park as for Lyttelton Rock & follow the track under the crag past Atatürk Wall & up onto the first saddle, Baby Brother can be seen on the R. Continue along the track under a large ugly crag to the next saddle & Trackside Cliff, the red coloured crag on the L of the track. After Trackside Cliff the track goes into the bush, look for a track heading down hill on your R (there is sometimes a cairn by a bait station) head down the hill till you come to a small black buttress on your L (The Black Bay) just after this the track splits, go R for Twisted Sister & L for Middle Sister. For Ugly Sister either, traverse along under Middle Sister to the end of the crag, or scramble down the slabby eastern side of Middle Sister, from east end of the crag go straight downhill for 10/12mts to a skinny flax then turn east & contour through a relatively clear area with bracken, at the end of the clearing go up hill till you hit rock then follow it east scrambling over a fuchsia framework to reach the start of the crag.

Climbing Notes

Warning, Climbing is Dangerous. By choosing to climb here you accept must responsibility for your own personal safety & you must make your own decision regarding the condition of any fixed equipment. Neither the first ascensionists nor, the author accept any responsibility for the condition of any fixed equipment. Replacement of fixed gear is a costly & time-consuming exercise so please do your bit, lower or top rope off your own quick draws. Only use fixed gear for abseiling, by doing this you will extend the life of the equipment considerably.

In this guide routes at each individual buttress/crag are described from the point at which you arrive at the crag.

The route identifier at the bottom of each climb shown on the topos is normally that of the earliest recorded route.

The Three Sisters Area:2022

As far as possible all known routes have been included in this guide, however there is not much information available, so the lines indicated are the ones we climbed & thought the most logical. If you want to know where a route goes read the text as well as looking at the topos. Some of the original lines have chain link protection. Route names & grades in **red text** are of the routes damaged during the earthquakes, these routes are recorded in the guide roughly where they would have been located on the crag.

None of the climbs are longer than 30mts therefore route lengths are not shown. The route name that appears on the topos at the base of route lines is always that of the earliest recorded climb.

Climb with care, test all holds before you pull on them, check your placements & wear a helmet. It is a good idea to take a brush & clean the routes, it will be appreciated by the next visitor to the crag.

Tracks are marked in

Sport routes are marked in

Variations are marked in

Trad or mixed protection climbs are marked in

Where shown seismically damaged climbs are marked in

YELLOW

RED

PINK

GREEN

WHITE

The following Abbreviations / Definitions have been used

#Br - Denotes the number of bolt runners or staples.

Sp - Denotes Sport Route.

Tr - Denotes Trad Route.

Mp - Denotes Mixed Protection Route (bolts & trad).

So - Denotes solo route unprotectable.

R & L - Denote right & left.

Grading

Grades in this guide assume climbing on sight & placing gear on lead.

The 'Ewbank Grading System' is not the best grading system when applied to mixed pro or 'boldly' bolted routes, it provides little in the way of information & is generally accepted as the technical difficulty of a particular climb.

NZ	15	16	17	18	19	20	21	22	23	24	25	26
American	5.8-	5.8	5.9	5.10a	5.10b	5.10b	5.10c	5.11a	5.11b	5.11c	5.12a	5.12b
Euro	4c	5a	5b	5c	6a	6a+	6b	6b+	6c	7a	7a+	7b

In this guide you will see a suffix to the grades (S1 – S3) this is to provide the climber with additional information on the overall seriousness of the climb.

S1 - A straight forward climb with good protection & a low risk of injury from a fall

S2 - Reasonable protection, but a fall could result in injury

S3 - Protection is marginal or non-existent & a fall could result in serious injury

Climbers should remember that this additional suffix to the grade is my opinion & in no way scientific, gear can fail, rock can fail & any fall can result in injury.

Baby Brother



Baby Brother was damaged during the 2010/11 earthquakes, there are no insitu anchor stations & originally the climbs were soloed, now they are not recommended, protection is likely to be scarce & suspect. Routes here are described from L to R but only 3 are shown here. There are no anchor stations here.

The Three Sisters Area:2022

GFB	Going for Broke	14	S3	So	0Br	<i>Henry Mares, 1977</i>
The grass filled crack						
TR	Travesties	8	S3	So	0Br	<i>Lindsay Main, 1977</i>
Climbs a wide crack on its L side then steps L around the roof,						
HP	Hot Potato	13	S3	So	0Br	<i>Lindsay Main, 1977</i>
Climb the rounded rib direct moving R near the top into 'Pedantry'						
	Pedantry	10	S3	So	0Br	<i>Lindsay Main, 1977</i>
<u>Not shown on topo.</u> The vegetated gully						
	Black Stump	12	S3	So	0Br	<i>Henry Mares, 1977</i>
<u>Not shown on topo.</u> A short corner with green lichen						
	Dancing Lesson	12	S3	So	0Br	<i>Henry Mares, 1977</i>
<u>Not shown on topo.</u> Start below the L of two sloping cracks & climb up to the L crack						
	Expletive Deleted	13	S3	So	0Br	<i>Lindsay Main, 1977</i>
<u>Not shown on topo.</u> The L of two jam cracks, moving L at the top.						
	Schism	13	S3	So	0Br	<i>Lindsay Main, 1977</i>

Not shown on topo. The R crack, good jams

Trackside Cliff

Trackside is not the most appealing of crags, situated just above the track the crag is predominantly made up of volcanic ash & rock on the L but more solid on the R & there are a couple of routes, courtesy of Joe Arts. There are no anchor stations here.

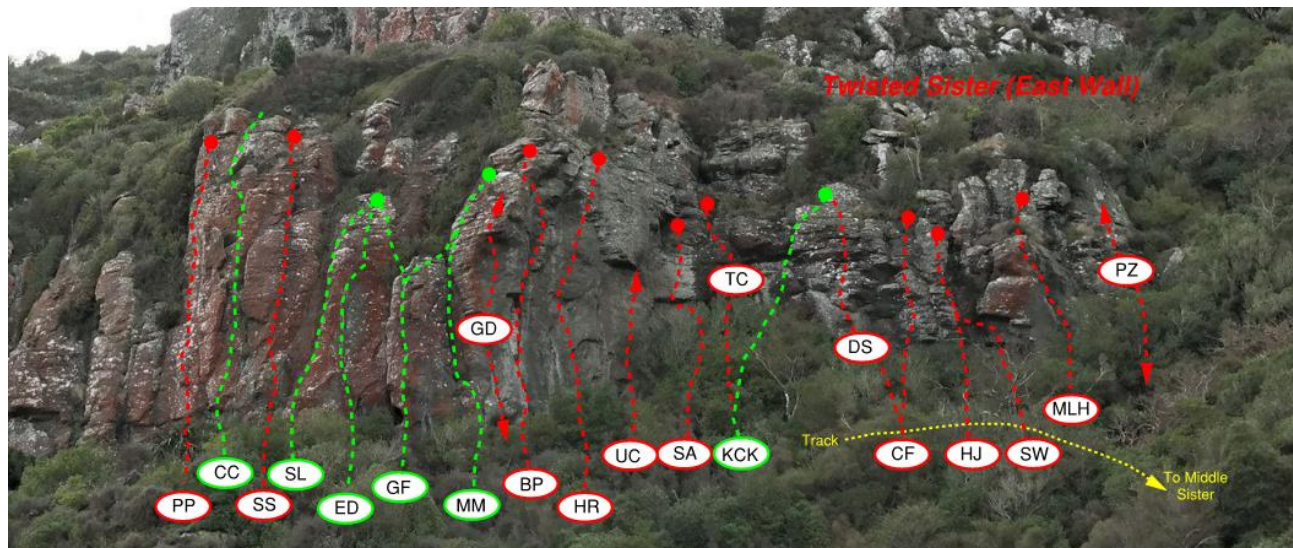
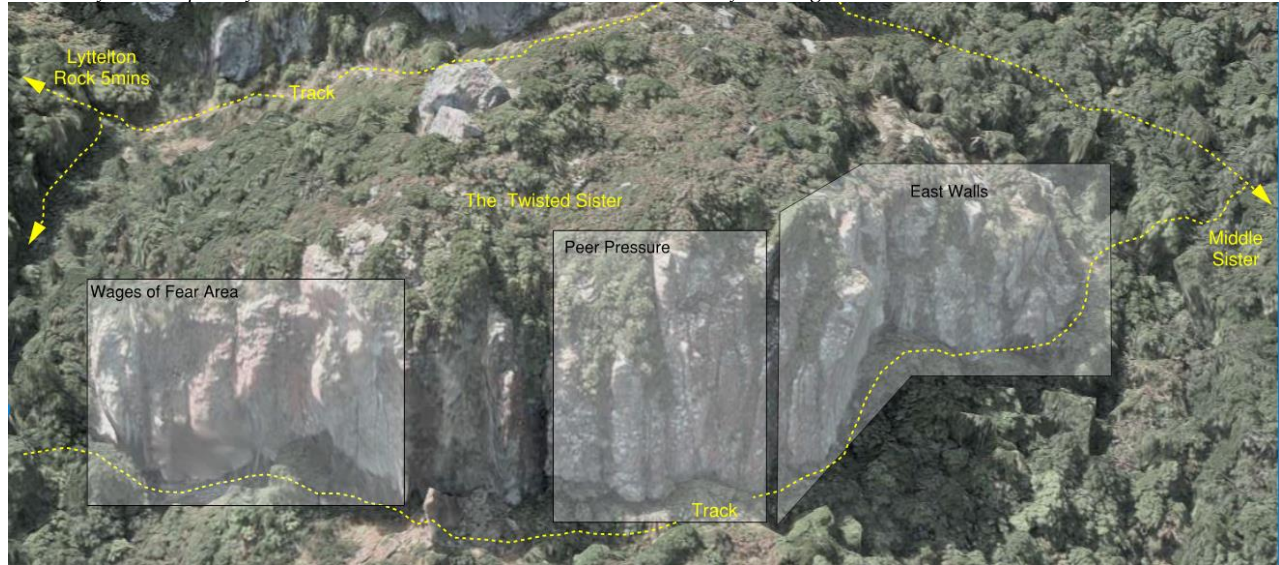


VC	Vomit Comet	20	S3	Mp	5Br*	<i>Joe Arts, 1995</i>
Start below Br1, then follow a rising traverse that aims to take in the best of the rock. Described as having 5Br's this may or may not be the case.						
MoT	Masses of Turkeys	13	S3	Tr	0Br	<i>Joe Arts, 1995</i>
From Br1 on 'VC' follow the groove & crack systems across a slabby area in the middle to exit cracks.						

The Twisted Sister

The best access is down the gully between Twisted Sister & Middle Sister, Twisted Sister is on the true R Middle on the true L when descending, from the main track go downhill through the bush until you come to 'Black Bay' & the corners at the R end of Middle Sister, where the track splits take the R branch to go to across to Twisted Sister.

When you traverse across from the start of the Middle Sister you arrive at 'The East Wall', due to the bush, it is darker in here & sometimes feels damp, the first climb is on a smooth black wall at the R end of the crag, this is 'PZ'.



PZ Pigs in Zen 24 S2 Sp 3Br Marcus Thomas, 1999

Not often climbed, this route is at the extreme R side of the crag on a short black wall, technical & fingery.

MH Making Losers Happy 19 S2 Sp 3Br ★★ Marcus Thomas, 1995

To the L of 'PZ' is a large tree close to the rock face, behind the tree is a steep groove, climb the groove past 2Br then go L to some large holes & Br3, top out by traversing diagonally up & L to a mantle shelf. Can be dirty but worth doing.

SW Side Wider 24 S1 Sp 5Br Tony Burnell, 2021

Start up the open corner to the L of 'MH', follow 3Br's around L to join 'HJ' at its Br3 (use a long draw) finish up 'HJ' to a DBA.

HJ Honest John 24 S1 Sp 4Br Tony Burnell, 2021

Start up the steep corner groove using the R arete & wall, above Br2 move L & go up to a large ledge & layback up to DBA.

CF Cock in a Frock on a Rock 22 S2 Sp 6Br Joe Arts, 1995

A Joe classic that had a makeover pre-quake & now sports a good number of Br's. Start in a wide groove & go straight up to a bucket past bolts; move R to top out.

DS Debris Slide 18 S2 Sp 4Br Marcus Thomas, 1995s

Start as for 'CF' to Br1 then go L to a good ledge, straight up & past Br2, 3 & 4 to DBA, a No1 Cam helpful below Br3.

The Three Sisters Area:2022

MP More Perverted than Twisted 27 S3 Mp 3Br Tony Burnell, 1999
Steep climbing up the inverted staircase & hanging flake between 'KK' & 'CF.' Awkward moves to get past Br2 & up to the large roof. Go R along the lip to Br3 & gain the flake. Swing R onto a slab & continue straight up to a DBA on the lip. Cams required for top section where the climb crosses 'DS'.

The next feature is a large leaning corner to its R there is a green coloured wall with a horizontal roof at 5mts.

KK Killing Capitalism with Kindness 20 S2 Mp 3Br Marcus Thomas, 1994
Climb the wall R of 'TC' trending diagonally R past a Br to a break, move slightly R to a crack & a tricky move to the anchor.

TC The Corner 23 S2 Mp 3Br ★★ Tony Burnell, 1999
Start as for 'KK' at Br1 continue straight up placing CD's in the corner crack. Continue up the wall & weave your way through the bulges finally moving L & up to an anchor.

SA Sister Act 24 S2 Sp 4Br Tony Burnell, 1998
Start below the horizontal roof L of 'KK. Use the vertical weakness at the R side of the wall & with small flakes & crimps get to the roof, go L under the roof to Br4 just above the lip. Climb the wall above using improving holds to a DBA.

From here to where the crag turns the corner the rock is not the best, but 'Bilge Pump' is a classic.

UC Unclaimed Route 25 S2 Sp 4Br ??, circa 2000
Th first line of Br's L of 'SA', possibly by Mark Watson.

HR Hard Rain 25 S2 Sp 4Br Tony Burnell, 1999
Start just R of 'BP' climb directly up the wall to gain a good standing position above Br2, go up & R to Br3 using poor undercuts to a hole below Br4. Shift R into a vague groove & go up to the recess above. Awkward moves up the near useless crack to a good hold, swing out R & power up to the belay.

BP Bilge Pump 22 S1 Sp 5Br ★★ Tony Burnell, 1998
Climbs the curving crack line via a small roof to an anchor station on the arête to the L at the top. Over initial bulge & the slabby wall past 3Br's to the large roof, climb the crack through the R side of the roof on good holds to the top of the pillar after Br4 move L across the head wall past Br5 & a series of large gas pockets to a ledge & belay on the arête.

Moving R there is The Red Wall with cracks interspersed with slabs & ends at the rock fall by 'Spanish Disco Owner'.



GD Groove Direct 25 S2 Sp 4Br Tony Burnell, 2002
Start as for 'BP' over the first bulge (use 2Br's on 'BP') on doubtful holds, climb the face of the pillar to a pocket below the Br4. Follow the arch L then move R to gain good finishing holds.

MM Meluzina Man 19 S3 Tr 0Br Marcus Thomas, 1994
The big corner to the L of the prow on the crag, bouldery start over a bulge to a ledge. Reasonable pro in the crack then go up to the 'ED' anchor.

GF Grunty Falcon 20 S2 Mp 1Br Marcus Thomas, 1994
From the cave at base of 'MM' muscle up to Br1 & the into the inviting crack. From the ledge climb either the L crack or the R arête at the vegetation make tricky moves to finish at 'ED' anchor or go R to 'GD' anchor.

The Three Sisters Area:2022

ED Energy of Dogs 22 S2 Mp 2Br ★★ *Marcus Thomas, 1994*

Start as for 'SL' but from the easy ramp climb the crack on the R (CDs) at the top of the crack move to the R of the Br & mantle onto slopers. The direct start by *Tony Burnell* in 1999 had a Br added in 2000 by persons unknown.

SL Surf Lost 17 S3 Tr 0Br *Marcus Thomas, 1994*

Onto the ramp just R of SSI & climb the crack above, with a committing move on its R arete, at the top move R to the chains at the top of 'ED'.

SS Sloper & Sloper Inc 22 S1 Sp 3Br ★★ *Marcus Thomas, 1995*

Start about 2mts R up a vague arete below the ledge, (committing & unprotected), then up fingery wall (crux) past the first bolt & on to slopers to finish, easier for the tall. Take care between the bolts, as the ledge is not far below. Currently the anchors are a problem (as if you didn't have enough already).

CC Constant Craving 19 S3 Tr 0Br *Marcus Thomas, 1995*

Starts a few mts R of 'PP', head up the wall on good holds then move R to twin cracks There was no insitu anchor.

PP Peer Pressure 24 S1 Sp 5Br ★★ *Tony Burnell, 1998*

Takes a line up the vague groove in the centre of the steep red slab. Start on the L & climb the steepening wall to gain the groove proper above the second bolt

FC Future Cops 21 S2 Sp 3Br *Joe Arts, 1994*

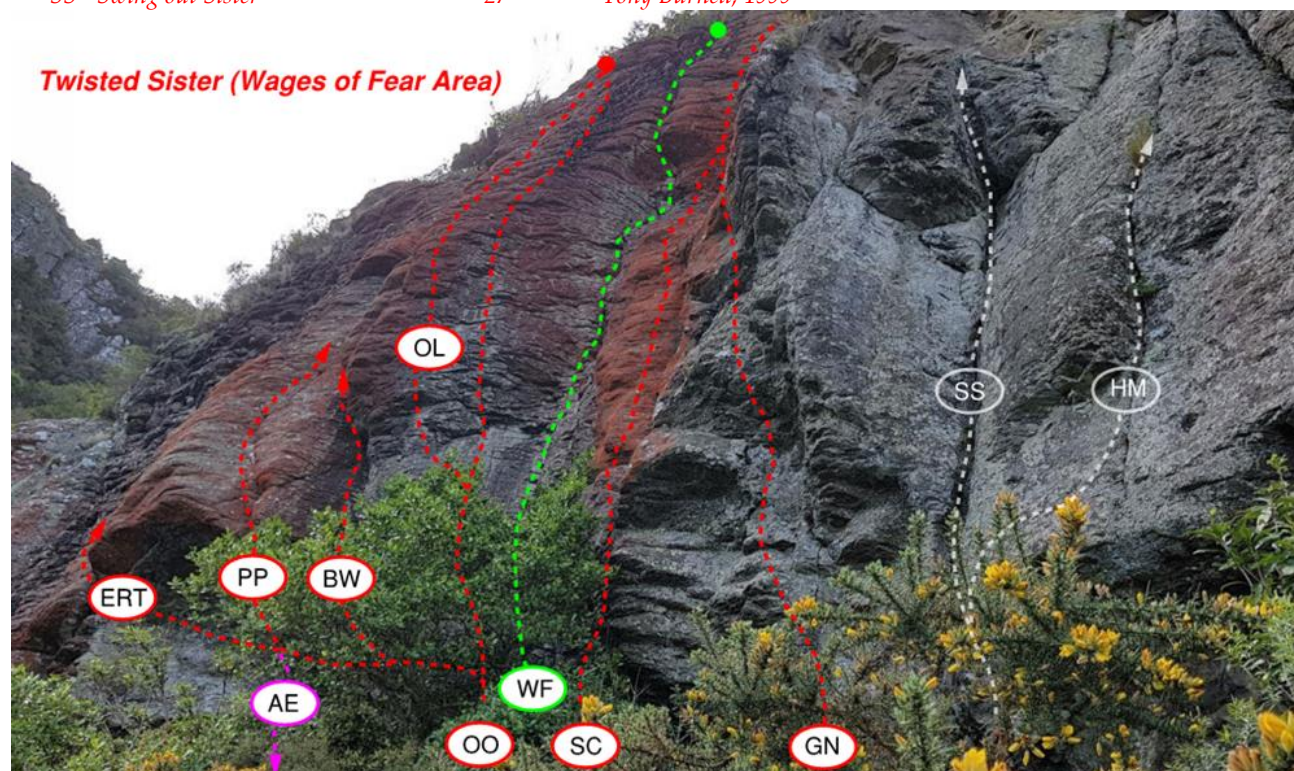
Not shown on topo. The next pillar has 3Br's on red slabby looking wall. Start to the R & traverse L to the first bolt. Crux at the top where you move R past the bolt & up. There's a poor, wire cable anchor around a tree.

SO Spanish Disco Owner 20 S3 Sp 1Br *Marcus Thomas, 1995*

Not shown on topo. On the L there is a roof at 3mts, go up the arete using the chimney (no pro) to the Br, the holds take you up & slightly R. Then you can amble up to the top (still no pro), or forget your second, traverse L & climb down the chimney, unclipping the Br as you go. Either way it's not a sport route.

The 2010 earthquakes caused a large roof collapse at the crag & the following climbs in red text were damaged/lost:

<i>The Stalker</i>	18	<i>Joe Arts, 1995</i>
<i>The Last Seduction</i>	23	<i>Joe Arts, 1995</i>
<i>The Sharpness Beckons</i>	23	<i>Tony Burnell, 2004</i>
<i>Onga Ongarangoutang</i>	25	<i>John McCallum, 1996</i>
<i>Centre Piece</i>	27	<i>Tony Burnell, 1998</i>
<i>HM - Hatched Matched & Dispatched</i>	27	<i>Tony Burnell, 1998</i>
<i>SS - Swing out Sister</i>	27	<i>Tony Burnell, 1999</i>



Below Wages of Fear there is a boulder on the ground with a native tree to its side, this is directly under 'WF'.

GN Getting Nowhere Fast 27 S2 Sp 5Br *Jonathan Wilkinson, 1999*

An old Roland Foster project. A hard fingery start leads to better holds, pull through the overhang to a semi rest before finishing.

The Three Sisters Area:2022

SC	Soft Centre	25	S1	Sp	5Br	<i>Tony Burnell, 1999</i>
Start just R of 'WF' in a R facing corner under a large roof. Swing out R over the roof & climb the series of steep bulges past 2Br to Br3 on a slab. Difficult moves over the roof enable a standing position to be gained in the corner above. Move up the corner staying to the L of the last bolt on 'GN' & go R to insitu belay						
WF	Wages of Fear	22	S2	Mp	3Br	★★★ <i>Joe Arts, 1994</i>
Starts off a boulder, move up & L into the steep corner, at the top of the steep corner move around R into a recess below a roof, exit L then back R to the chains.						
OO	Onga Onga via Interflora	24	S2	Sp	5Br	★★★ <i>Phil Higgins, 1996</i>
The line of bolts with a steep headwall just L of 'WF', leave the ground as for 'WF' & move immediately L onto the face, go up to the steep head wall & climb dynamically to finish on the slab.						
OL	Onga Onga L Hand	25	S2	Sp	5Br	★★ <i>Tony Burnell, 1999</i>
An alternative finish to 'OO'; from Br3 at the top of the initial wall move L & climb even steeper rock on even smaller holds, as the angle eases the holds disappear leaving you on the usual rounded red holds.						
<i>The next climbs are on or above The Cave towards the L end of the crag</i>						
BW	Bullworker	25	S2	Sp	6Br	★★ <i>Tony Burnell, 1999</i>
Start as for 'OO' but traverse L along the lip of the bulging roof & around the corner to the base of the wide corner crack. Climb the steep off width crack.						
PP	Palm Pilot	27	S2	Sp	7Br	<i>Tony Burnell, 1999</i>
Start as for 'OO' & traverse L, go under 'BW' & move up to the main roof, difficult moves through the roof & into the steep, vague groove, above finish into the anchors of 'BW'.						
AE	Age of Enlightenment	29	S3	Sp	8Br	<i>Jarrod Alexandre</i>
An impressive direct start to 'PP' from the ground follows the Br's over the big roof onto the ledge, then continue up 'PP' to the top						
ERT	English Rope Trick	24	S2	Sp	8Br	<i>Tony Burnell, 1999</i>
Start as for 'OO' & traverse L past 'BW' & 'PP' before going over the roof & up the wall just R of 'DJ'.						
DJ	De ja Jeux	27	S1	Sp	6Br	★★ <i>Tony Burnell, 1999</i>
<u>Not shown on topo.</u> Originally a <i>Phil de Joux</i> project. Climb deviously up through the series of rooves & corners.						
TA	Twisted Arete	28				<i>Derek Thatcher, 2002?</i>
<u>Not shown on topo.</u> The very steep arête just L of the start of 'DJ', that leads into 'DJ' to move L into 'Gr'.						
<i>The next two climbs are to the L of the main cave area & marked by a large tree at the base</i>						
Gr	Graft	22	S2	Sp	5Br	<i>Grant Piper, 2005</i>
<u>Not shown on topo.</u> Start as for 'TT' to Br2, go out R & get established on the wall above the overhang & go up to the rap stn.						
TT	Traptic Trip	22	S2	Sp	5Br	<i>Clinton Bevan, 1996</i>
<u>Not shown on topo.</u> The steep line of Br's in the overhanging corner system above tree.						
<i>The wall above the gully around the corner at the extreme L side of the crag</i>						
BR	Big Red	28	S2	Sp	3Br	<i>Derek Thatcher, 2002</i>
<u>Not shown on topo.</u> On the true L of the original descent gully at the W end of the crag, traverse out to the arete & follows the line of Br's.						
Ong	Onglaphile	25	S1	Sp	3Br	<i>Roland Foster, 1996</i>
<u>Not shown on topo.</u> On the true L of the original descent gully at the W end of the crag, follows the Br's up the wall to an abseil chain.						

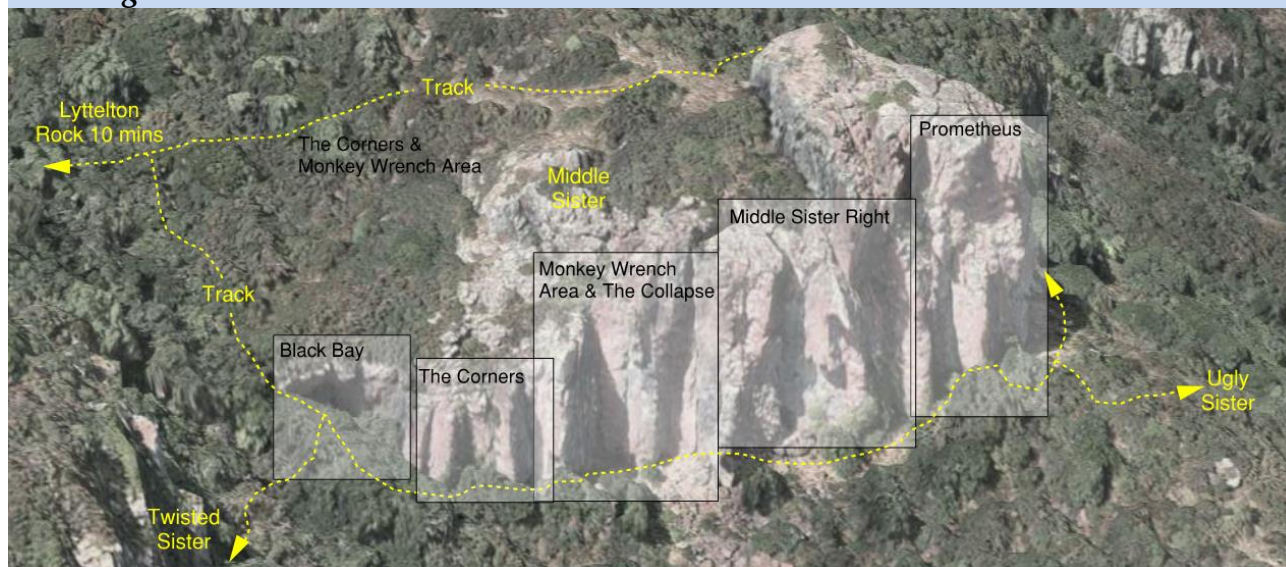
The Middle Sister (39 Climbs)

The Middle Sister was the first of the Three Sisters to be developed with the first climbs being done in 1973, Grand Central Station, by Lindsay Main, nothing much happened until 1977 when Lindsay returned with Henry Mares & so started the first phase of the crag's development. When descending from the main track between Twisted & Middle Sister the first wall you come to on your L is 'The Black Bay' which has a couple bolted lines, routes at the Middle Sister are described from this point, i.e., from L to R.

Seismic Damage



Climbing Areas



The first two climbs at Middle Sister are in The Black Bay, a corner on the L of the approach track when descending

Un	Unnamed	23	S2	Sp	3Br	Unknown, 1993
----	---------	----	----	----	-----	---------------

Not shown on topo. The R most of two climbs on the wall L of the corner.

AT	Antie-Tantie	25	S2	Sp	3Br	Iain Lawson
----	--------------	----	----	----	-----	-------------

Not shown on topo. The L line of the two climbs on the wall L of the corner.

Moving R there are the Corners, a series of red lichenous corners with a series of grooves, cracks & aretes. The first corner system has an anchor station on the L at the top, this anchor is used for the first three lines.

GS	Gold Soundz	24	S3	Sp	2Br	Marcus Thomas, 1997
----	-------------	----	----	----	-----	---------------------

The rounded arete on the L side of the first corner, finish at a common anchor.

SO	Short Order	16	S2	Tr	3Br	Lindsay Main, 1981
----	-------------	----	----	----	-----	--------------------

The first of two routes, climbs the face L of the corner, move L to a common anchor.

DS	Desert Solitaire	21	S3	Mp	1Br	Brain Fish, 1981
----	------------------	----	----	----	-----	------------------

Start as for 'SO' but move R onto the arete & follow this past a Br, at the top of the arete go back L to a common anchor.

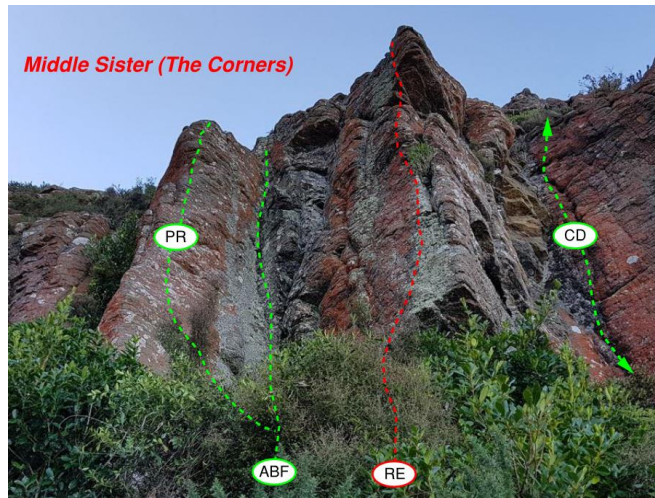
The Three Sisters Area:2022

C Caley 21 S3 Sp 1Br Ton Snelder, 1990

A typical 'Ton Snelder' climb, bold with little in the way of gear, climb the short corner & flake.

PR Penal Rates 22 S2 Mp 2Br Lindsay Main, 1990

Start in the corner of 'ABF' balance across to the L arête, up past bolts



ABF A Bridge to Far 17 S3 Tr 0Br

Lindsay Main, 1977

This route climbs the 2nd corner to the R of 'SO', up the crack & rib above



The next climbing area is the Monkey Wrench Corner. Monkey Wrench Gang is a Port Hills Classic a mixed pro line Joe Arts. To the R of MWG' there is some extensive seismic damage on the R side, the newly exposed rock contains some good sport climbs & a terrible unprotectable chimney line

RE Rib Eye 21 S2 Sp 3Br Tony Burnell, 2005

Start at the undercut arête L of 'ABF' climb the rib to the large roof. Use good holds L of a blind groove before a thin break takes you back to the arete & Br3, continue straight up to a DBA

JW Joggersaurus Wrecked 20 S2 Tr 0Br Neil Sloan, 1996

Start as for VC but go L on the flake then up the on the R of the crack

VC Volcanic Cafe 19 S2 Tr 0Br Joe Arts, 1990

The crack had a roof at 2/3 height but is now in need of reinvention

CD Corner Dearie 17 S2 Tr 0Br Neil Sloan, 1996

The corner prominent corner to the L of 'MWG', also in need of reinvention

MWG The Monkey Wrench Gang 22 S1 Mp 3Br ★★★ Joe Arts, 1990

A classic that luckily escaped the 2010 earthquakes, its soft for its grade but the crux is at the top. Start up the R facing shallow groove on trad to a short, bolted, headwall

The following routes were lost to the quake.

<i>Judge & Jury</i>	17	<i>Lindsay Main, 1977</i>
<i>Frog Buttress</i>	20	<i>Richard Kimberley</i>
<i>Jesse Owens</i>	19	<i>Joe Arts 1990</i>
<i>Jesse Owens Direct</i>	21	<i>Tony Burnell, 1998</i>
<i>Nasty & Unconstructive</i>	22	<i>Joe Arts 1999</i>
<i>Fear of Flying</i>	18	<i>Henry Mares, 1997</i>

L&K Lock & Key 19 S2 Sp 5Br ★★ *Michael Eatson, 2016*

This should be a classic but, (there is always a but) the crux is below Br1 & the landing would be unpleasant, a fall at Br2 or Br3 would probably result in a ground fall. Climb the wall just L of the arete into the hanging groove, continue up directly up the final corner system, the top crux can be avoided by moving L then back R.

EOI Edge of Insanity 22 S1 Sp 7Br ★★ *Tony Burnell, 2019*

Climb the wall around the corner from L&K, stay on the wall all the way to the top, small holds & layaways, sneaking off L into 'L&K' would lower the grade

GG Grassic Gibbon 22 S2 Sp 6Br *Iain Lawson, 2016*

Generally, climbs the centre of the new scar R of the big chimney. Due to the limited number of bolts the exact line is tricky to work out, people have been known to bridge to the wide chimney ('SS').

SS Sam's Squeeze 10 S3 So 0Br *Sam Waetford, 2016*

Inclusion of this recorded route is by no means a recommendation; this soloed route climbs the disgusting looking chimney formed by the detached pillar.

AI Attachment Issues 22 S1 Sp 6Br ★ *Tony Burnell, 2019*

Climb the L arête, of Suicide Wall, start under the newly formed roof, climb easily up to the roof, swing out L & go up to a ledge, continue straight up the arête L of the open groove

SM Suicide Machine 21 S3 Mp 3Br *Joe Arts, 1990*

Climbs the red face of the now detached pillar

ANF Absolutely no Fear of Flying 20 S1 Sp 6Br ★★ *Tony Burnell, 2019*

Climbs the centre of the wall to the R of the detached pillar. Straight up the wall to Br3, go around L & back R to Br4 straight up the wall from here.

FP Flight Path 20 S3 Tr 0Br *Tony Burnell, 1998*

This route goes up the wall R of 'ANF', pulling over the roof, then up the red wall past, the last Br of 'LF' can be clipped.

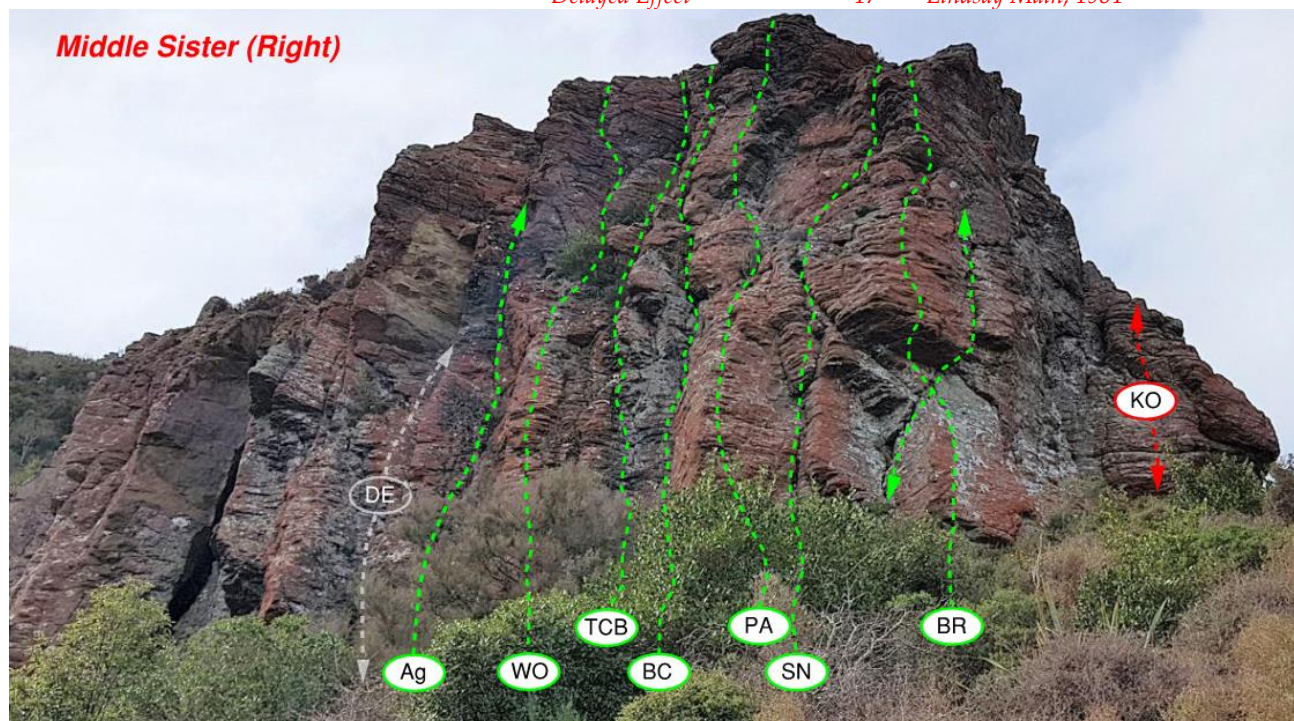
Learning to Fly 20 S2 Mp 4Br *Marcus Thomas, 1997*

Not Shown on Topo. Start as for 'EA' going L after Br2 to the arête, then up & over the small bulge

Evasive Action 17 S2 Mp 2Br *Lindsay Main, 1984*

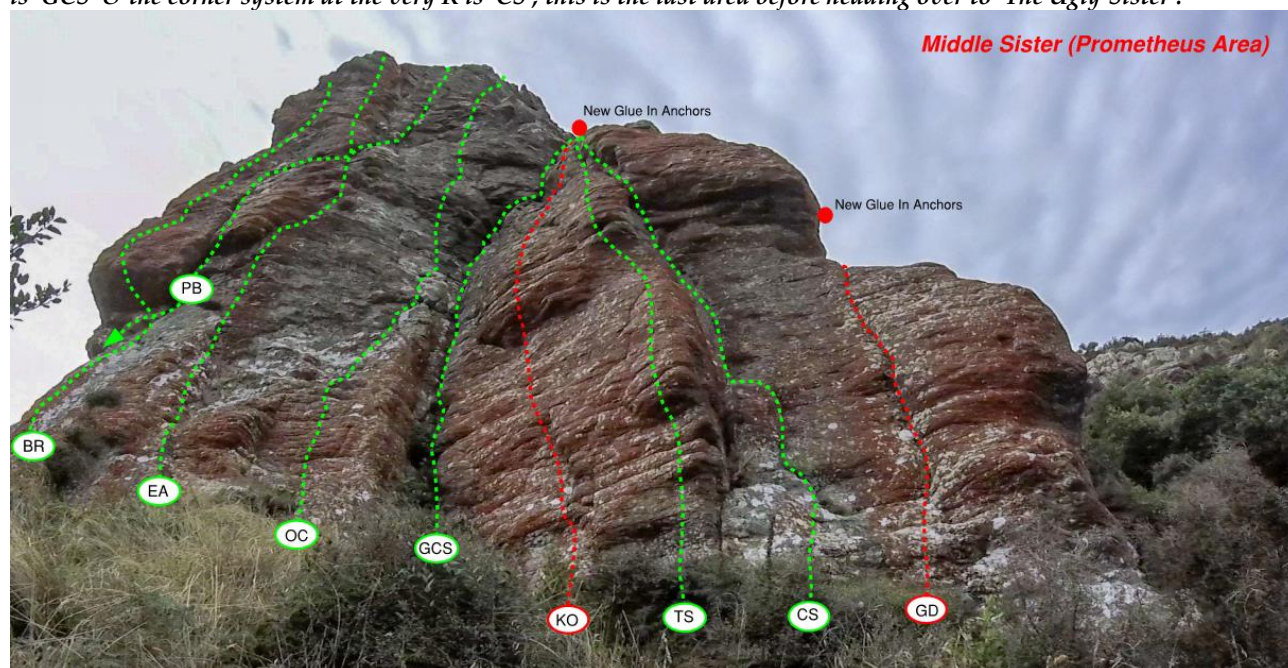
Not Shown on Topo. Climb the wall to the initial roof, move R & go up the arete & the corner above

The following routes were lost to the quake. *Evasive Action the Sequel* 16 *Joe Arts, 1994*
Delayed Effect 17 *Lindsay Main, 1981*



The Three Sisters Area:2022

Ag	Afterglow	18	S3	Tr	0Br	<i>Lindsay Main, 1984</i>
Start on the R of the creeper covered wall ('DE') bridge up a groove before continuing up the wall & arete above.						
WO	Working Overtime	20	S3	Mp	1Br	<i>Lindsay Main, 1990</i>
The next arete to the R.						
TC	Taking Care of Business	20	S3	Tr	0Br	<i>Lindsay Main, 1990</i>
Climbs the incipient crack on the R of 'WO'						
BC	Ball & Chain	15	S2	Tr	0Br	<i>Lindsay Main, 1977</i>
The very red flaring chimney with jams at the back, the crux is at the small tree, the climb has no redeeming features according to the first ascensionist						
NS	No Static at all	24	S2	SP	4Br	<i>Richard Kimberley, 1999</i>
Climbs the steep blind crack on the L facing short red wall R of 'BC' to an anchor.						
PA	A Pain in the Arts	18	S3	Mp	1Br	<i>Marcus Thomas, 1995</i>
The arête R of 'BC', start off a loose block, go up to a Br, follow up the R edge of arête to an easier section, finishes up the overhanging red face using horizontal breaks.						
SN	Sharks Nest	16	S3	Tr	0Br	<i>Henry Mares, 1997</i>
Reasonable climbing up the L facing corner on small holds at 8mts go L to easy ground followed by ta crack system						
<i>Moving R we come to Prometheus Area, a great looking red buttress reducing in height on the R, the large corner/chimney is 'GCS' & the corner system at the very R is 'CS', this is the last area before heading over to 'The Ugly Sister'.</i>						



BR	Bolt Revolt	23	S3	Tr	0Br	<i>Tony Burnell, 1999</i>
Takes a bold line on the arête crossing 'PB' below the roof, cross the roof with difficulty & go up the wall above						
PB	Prometheus Busted	16	S2	Tr	0Br	★★
Starts L of 'BR', a classic trad line that wanders from the far L across the face to go up the jamming crack that splits the upper face, once on the upper wall follow the R trending weaknesses to the top.						
EA	Eliminate A	22	S3	Tr	0Br	★
Takes a line pretty much straight up the face veering R around the end of the roof & going up through 'PB' & step L to follow the faint 'S' shaped groove up to final head wall.						
OC	Obsessive Compulsive	19	S2	Tr	0Br	<i>Richard Kimberley, 1999</i>
Climbs the wall just L of 'GCS' & uses pro in that route, continue up the face L of 'GCS' with limited pro						
<i>There is a new glue in anchor that serves the next 4 climbs</i>						
GCS	Grand Central Station	12	S2	Tr	0Br	★
The possibly vegetated) crack that steps up & trends R at the R end of the buttress						
KO	Kurious Oranji	24	S3	Sp	2Br	★
The central line up the orange face with 2Br, delicate climbing to the bulge then straight over to top out. Belay as for CAS						
TS	Tangerine Scream	21	S3	Tr	0Br	<i>Tony Burnell, 1998</i>
Poor gear but the climbing is good, takes the arête R of KO, climbed strenuously on its L side to a good ledge & a shallow pocket continue straight up to join 'CS'.						

The Three Sisters Area:2022

CS Clutching at Straws

18 S3 Tr 0Br

Lindsay Main, 1984

Poor gear but the climbing is good. Start at the R side of the orange wall with a R facing corner containing a semidetached pillar. Exit L then back R

GD Golden Delicious

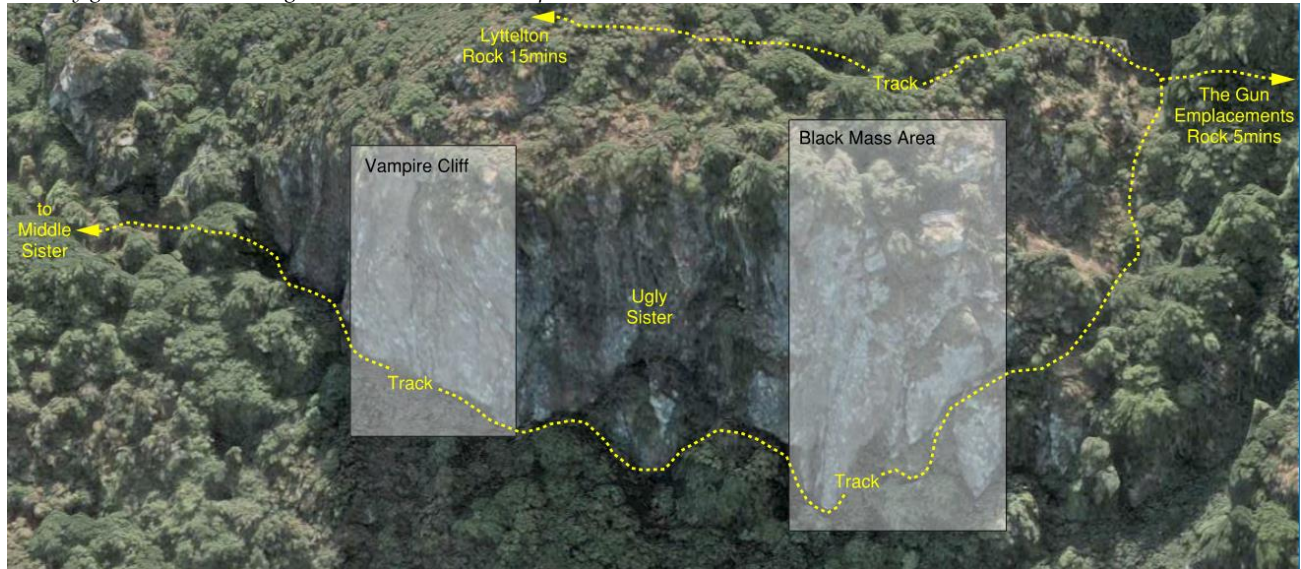
22 S3 SP 1Br

Marcus Thomas, 1997

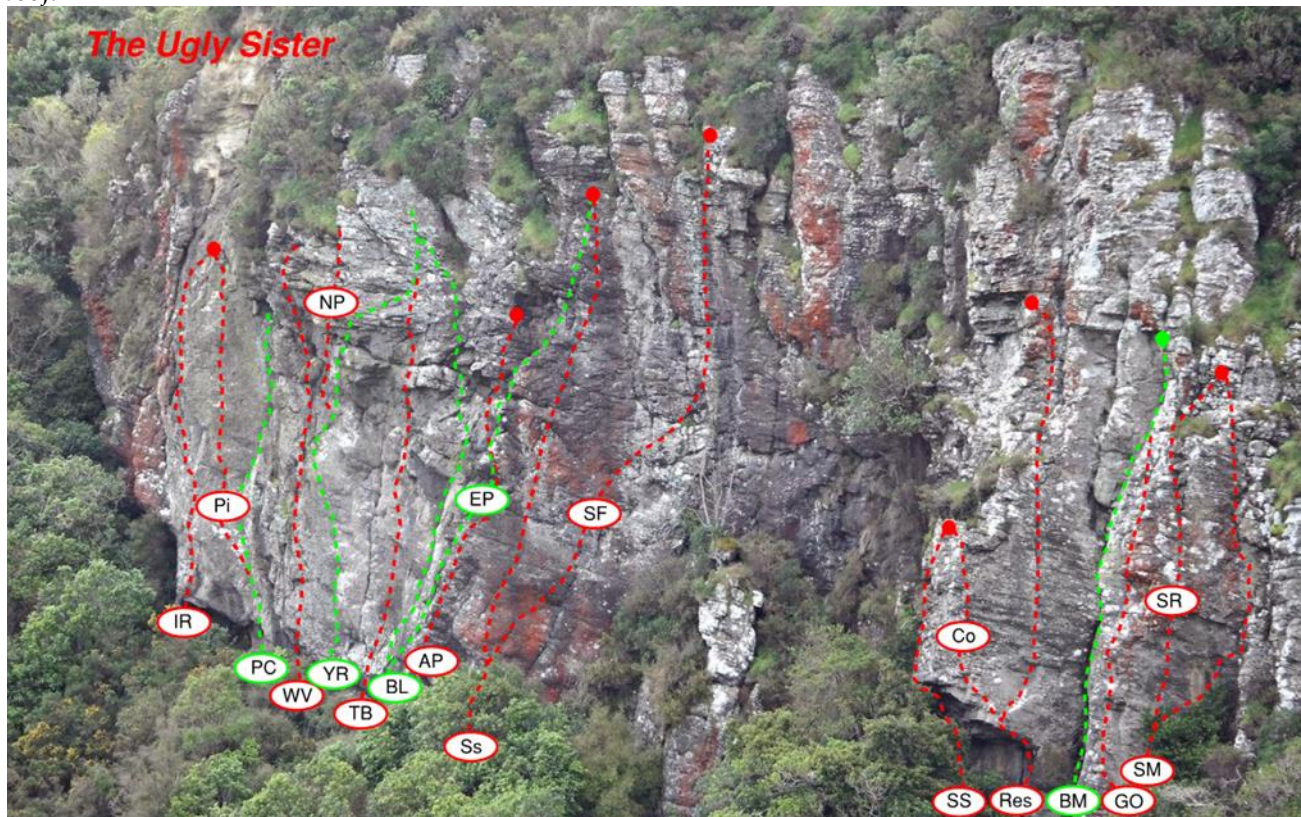
A short tricky climb on the Rh end of the crag

The Ugly Sister (21 Climbs)

The Ugly Sister, inspiringly named, is the last of the triplets, the smallest in terms of climbs but quite tall with little seismic damage. The initial development was by Henry Mares & Lindsay Main in the late 70's, then by Lindsay & Marcus Thomas, finally the last stage of development was led by Tony Burnell, Grant Piper & a couple of others. Underserving of her less popular reputation, the climbs are very good, the rock is rough & most routes are well protected



As you approach from Middle Sister you pass under a small, steep black buttress with an abandoned project through the roof.



Into the Groove	21	S2	Tr	0Br	<i>Lindsay Main, 1999</i>
<i>Not Shown on topos.</i> This climb is the first climb you come to when approaching from Middle Sister, the route climbs the R corner of the open groove & finishes at chains at two-thirds height.					
RG Revenge of the Gorse	20	S2	Mp	2Br	<i>Lindsay Main, 1997</i>
Climbs the red vegetated leaning groove, a steep start then up groove & corner crack.					
IR In the Rough	24	S1	Sp	8Br	<i>Tony Burnell</i>
Start below the overhang L of 'PC', strenuous footloose climbing to good holds by the first bolt, thin moves up to Br2, step R to a thin vertical rib, after Br3 go easily to Br4 then up the steep broken groove to reach a Br on the R, easier climbing to a resting ledge Br shared with 'Pi'. Move up to the base of the off-width crack then swing up R from the big pocket to slopey holds & a good jug (BR), move up one move then R & move over to the belay of 'Pi'.					
Pi Ping	24	S1	Sp	7Br	<i>Tony Burnell</i>
Start as for 'PC', at the first bolt move L & up to a bolt, good holds lead to a third bolt. Thin climbing up the wall above before moving L to the fourth bolt. Easier climbing to a good resting ledge. Move into a scoop on the R & up to undercuts in the roof. Steep climbing up the face to past the last Br then up to DBA.					
PC Par for the Course	19	S2	Tr	0Br	<i>Lindsay Main, 1997</i>
Start at a wide crack with gear bridge R to gain the ledge. Then climb R crack on the R of the pillar, finish through roof as for 'WV' chains.					
WV The World is a Vampire	19	S2	Mp	3Br	<i>Marcus Thomas, 1997</i>
Start below the L edge of the big roof. Boulder up to Br1 (crux) the easily up & over the large block to Br2, finish up the overhung exit on jugs to anchors.					
NP New Age Power	24	S2	Sp	7Br	<i>Marcus Thomas, 1999</i>
The line goes through the roofs where they are biggest. Start-up 'YR' for 3Br, then straight up through the roofs with a glued-on hold.					
YR The Young & the Reckless	22	S2	Mp	4Br	<i>Marcus Thomas, 1997</i>
Start up a groove & boulder to Br1, climb wall (thin) past 2Br, above Br3 move R & trend through the roofs to DBA.					
TB The Bat	25	S2	Mp	5Br	<i>Tony Burnell, 2004</i>
Takes a line up the steep grove without recourse to the crack on the L. Climb the groove direct & the short steep wall to a no hands rest on a ledge below the big roof, small medium cams, move up the steepening wall to good holds then R to a Br on the lip continue straight up on good holds then go R & up to a belay.					
BL Body Language	18	S2	Tr	0Br	<i>Lindsay Main, 1997</i>
Boulder up the easy angled crack at R side of the wall, at the first roof pull over on the R to a stance below the next roof, continue up the crack passing another roof to anchors on the L.					
EP Eight pints	18	S3	Mp	1Br	<i>Grant Piper, 2004?</i>
Not recommended by the first ascensionist, clip Br1 on 'YR' then follow the crack system to DBA					
AP Amateur Production	18	S1	Sp	6Br	<i>Clayton Garbes, 2005?</i>
Start R of 'EP', climb arete, crossing 'EP', go over a small overhang to a DBA.					
Ss Sideshow	22	S1	Sp	6Br	<i>Grant Piper, 2005?</i>
Start on the R of 'AP' climb the technical wall to a ledge, bigger holds to the DBA.					
SF Stage Fright	23	S1	Sp	7Br	<i>Grant Piper, 2005?</i>
Use Br1 on 'Ss', go R to Br2 through the crux to a ledge, then more easily up steeper ground & DBA.					
<i>Head further R into the bush to find the next climbs around a black roof, the prominent corner of 'BM' is a good landmark.</i>					
SS Slap Stick	25	S1	Sp	6Br	<i>Tony Burnell, 2004</i>
The overhang L of 'BM', start off the tree to the L, climb the groove to the roof, pass this with difficulty to easier climbing on the slabby wall above, DBA L of the arête.					
Co Comedy	25	S1	Sp	6Br	<i>Tony Burnell, 2004</i>
Climbs over the roof L of 'Res'. Start as for 'Res', from the big holds swing out L & cross the roof to gain the blunt arête, up this to the top then move L to the belay of 'SS'.					
Res Ressurgence	23	S1	Sp	6Br	<i>Tony Burnell, 2004</i>
Climbs the overhanging crack line L of 'BM' & L of the flush. Start up a groove to the roof, pass this up to big holds & gain the base of the crack. Climb the crack on the L side move back R above the last bolt where easier climbing leads to a double belay					
BM Black Mass	14	S2	Tr	0Br	<i>Henry Mares, 1977</i>
Climbs the prominent black corner to the R side of the crag. Follow the corner exiting up the R trending ramp					
GO Game On	21	S1	Sp	8Br	<i>Grant Piper, 2004</i>
Bolted route R of BM, following arete & face to the L of small roof to easy slab that steepens up at the last bolt, savouring the exposure for the rap					
SR Skid Row	22	S1	Sp	6Br	<i>Tony Burnell, 2004</i>
Start as for 'SM' but at Br2 continue up the steep wall on the R of the arete, at the top go R to anchors.					

SM Skid Mark

21 S1 S9 6Br

Tony Burnell, 2004

A prominent corner with a brown streak on the L wall, start up the smooth wall with rounded hold after Br2 move R into the corner, from Br3 bridge up the groove to the roof, pass this then carry on up the groove on big holds. Climb the crack move back L at the top to a bolt belay